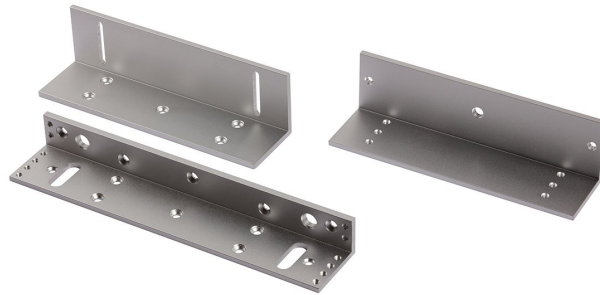




HACC-LH250-LZ



FEATURES

LZ-Bracket of Magnetic Lock, for HACC-LH250S/D

- The LZ-bracket adopts aldural material with the surface sandblast
- It is suitable for in-swing doors
- The door opens towards inside at the angle of 90 degrees
- The shell is hard anodizing electroplating operated

°Specifications

Model Number	HACC-LH250-LZ
Dimension	L-bracket: 9.84" x 1.85" x 1.12" Z-bracket: 7.09" x 1.97" x 1.97"
Weight	1.58lbs