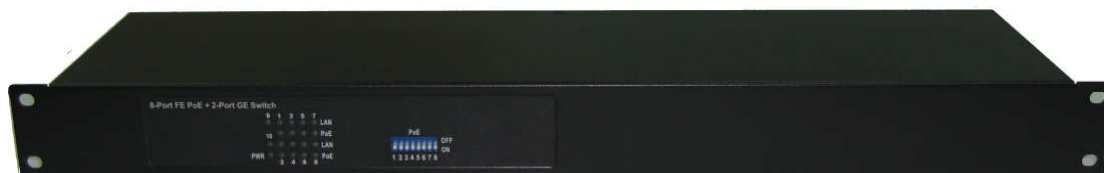

8-port FE PoE + 2-port GE Switch HTA-PW802



Introduction

HTA-PW802 is an 8-port PoE and 2-port Gigabit Ethernet Switch. With 8 dip switches, each PoE port can be manually set for On-Off control. HTA-PW802 is supporting up to 30W on each LAN port if its port DIP switch is ON. Two 10/100/1000M (UTP) are used to connect with other edge switch or NVR as uplink ports.

Auto-MDI/MDI-X

Every port can automatically sense your type of cable, so there is no need for crossover cables whether you are connecting this switch to another switch or to a computer.

Power Protection

PW802 series supports power protections as OVP (Over Voltage Protection), OCP (Over Current Protection), OTP (Over Temperature Protection), robust short-circuit protection and surge protection.

Non-Blocking

This switch receives and forwards traffic seamlessly with its non-blocking wire-speed. Every Fast Ethernet port simultaneously supports up to 200Mbps of bandwidth in full-duplex mode. This feature provides full wire speed to the connected devices and allows you to run a smooth network.

Store and Forward

It maximizes network performance while minimizing the propagation of bad network packets.

Hunt Electronic USA, Inc.

11790 Jersey Blvd, Rancho Cucamonga, CA 91730

Tel: 1-626-987-6999 Fax: 1-626-987-6997 www.huntcctv.com

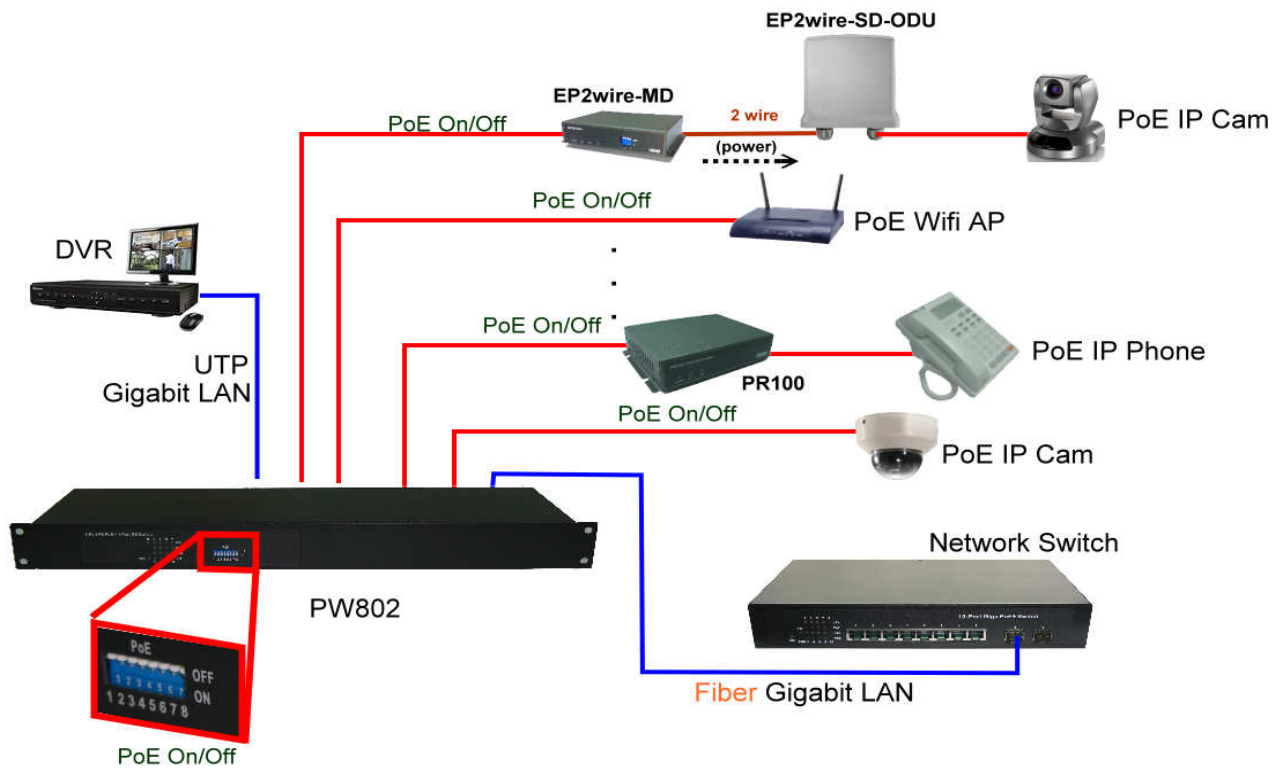
Technical Specifications

Standards	IEEE 802.3 10BaseT IEEE 802.3u 100BaseTX IEEE 802.3z 1000BaseTX IEEE 802.3x Flow Control IEEE 802.3at/af, midspan PoE compliant
Features	MAC Address: 8K Buffer Memory: 512KB Transmission Method: Store and Forward
Filtering/Forwarding Rates	1000Mbps port – 1,488,000pps 100Mbps port - 148,800pps 10Mbps port - 14,880pps
Transmission Media	10BaseT Cat. 3, 4, 5 UTP/STP 100BaseTX Cat. 5 UTP/STP 1000BaseTX Cat. 5 UTP/STP
PoE on each Port	30W max.
Output PoE Pin	4,5,7,8
LED Indicators	Power, LAN1~10 port, PoE 1~8 port,
Power Input	Input: 100-240VAC, 50~60Hz, 65W or 120W or 250W
Dimensions	480 × 118 × 44 mm (L x W x H) with holder
Box Weight	2.7 kg
Operating Temperature	0 to 50°C
Humidity	10 to 90% RH (non-condensing)
Certifications	FCC Class A, CE

Ordering Information

Hunt Electronic USA, Inc.
 11790 Jersey Blvd, Rancho Cucamonga, CA 91730
 Tel: 1-626-987-6999 Fax: 1-626-987-6997 www.huntcctv.com

Application Diagram



***PoE Repeater : PR100, EP2wire**